



RECP #: 752793
 RECORDED 5/8/2019 AT 1:17 PM BK# 2620 PG# 1835
 Debra K. Lee, CLERK OF LARAMIE COUNTY, WY PAGE 1 OF 1

STATE OF WYOMING CORNER RECORD

(In compliance with the CORNER PERPETUATION AND FILING ACT, Wyoming Statutes, 1997 Section 33-29-140, et. seq., and the Rules and Regulations of the Board of Registrations for Professional Engineers and Professional Land Surveyors)

WEST QUARTER CORNER SECTION 5, T. 18 N., R. 63 W., 6TH P.M., LARAMIE COUNTY, WYOMING

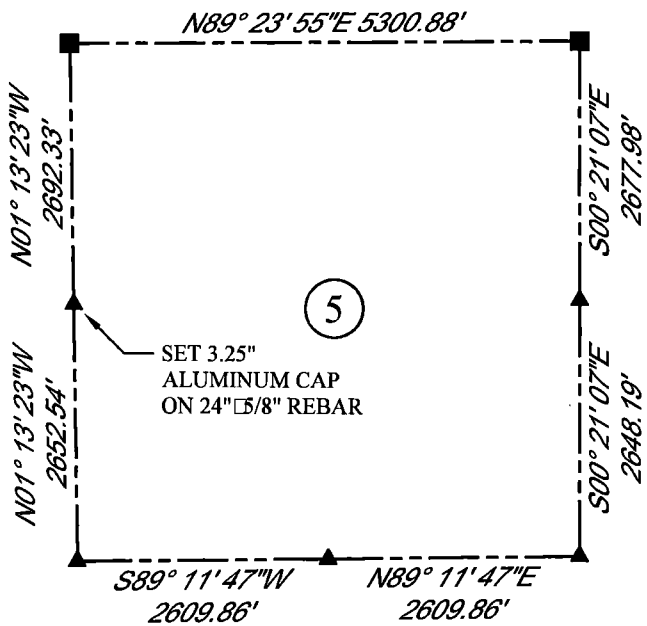
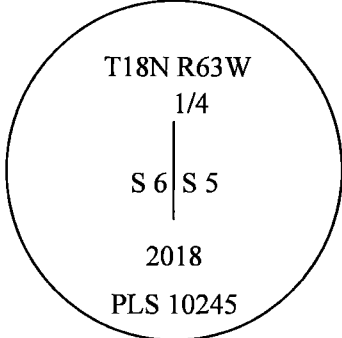
GLO: SET A GRANITE STONE 16X12X8, 10 IN. DEEP, MARKED 1/4 ON W. SIDE FOR 1/4 SEC. COR.

FOUND: NOTHING. SET ALUMINUM CAP AT PROPORTIONATE (SINGLE) DISTANCE



SCALE: NONE
 NORTH DETERMINED BY
 G.P.S OBSERVATIONS

SET 3.25" ALUMINUM CAP ON #5 REBAR,
 AT SURFACE, STAMPED AS SHOWN.
 PLACED A MOUND OF STONES ON NORTH
 SIDE OF CORNER. SET 1 MAG NAIL IN
 CORNER FENCE POST □- 33'
 SOUTHEASTERLY.



LEGEND:

- FOUND BLM CAP
- FOUND USFS CAP
- FOUND STONE
- FOUND PRIVATE MONUMENT
- ◆ CALCULATED POSITION
- ▲ SET MONUMENT (LS10245)
- SECTION LINE

DATE OF FIELD WORK: 8/31/2018 OFFICE REFERENCE: MERIDEN

CROSS INDEX DIAGRAM

	1	2	3	4	5	6	7	8	9	10	11	12	13	14	15	16	17	18	19	20	21	22	23	24	25	
A																										
B																										
C					6	●	5		4					3					2							
D																										
E																										
F																										
G					7		8		9					10					11							
H																										
J																										
K																										
L					18		17		16					15					14							
M																										
N																										
O																										
P					19		20		21					22					23							
Q																										
R																										
S					30		29		28					27					26							
T																										
U																										
V																										
W																										
X					31		32		33					34					35							
Y																										
Z																										
	1	2	3	4	5	6	7	8	9	10	11	12	13	14	15	16	17	18	19	20	21	22	23	24	25	

WOOD
 2615 AVIATION DRIVE
 SHERIDAN, WY 82801
 PH: 307-675-6400



THIS CORNER RECORD WAS
 PREPARED BY ME OR UNDER
 MY DIRECTION AND
 SUPERVISION,
 SEAL AND SIGNATURE

